

# The essential guide Magelis

## Human/Machine Interfaces

helping you easily  
select the right product

# 2008



# Human/Machine Interfaces

**Magelis**, a complete offer of Human Machine Interfaces to meet your needs in a wide range of applications.

**All in One**

**Small Panel**

**Magelis XBT N/R/RT**

**Advanced Panel**

**Magelis XBT GT/GK/GTW**

**Embedded Panel**

**Magelis Smart**

**PC Panel**

**Magelis Compact iPC**

**BOX**

**Embedded BOX**

**Magelis Smart BOX**

**PC BOX**

**Magelis Compact PC BOX**

**Magelis Flex PC BOX**

**Display**

**Industrial Display**

**Magelis iDisplay**

**Configuration Software**

**Vijeo Designer Lite**

**Vijeo Designer**

# Contents

## Human/Machine Interfaces

● Small Panel with matrix screen <b>Magelis XBT N</b> .....	2
● Small Panel with matrix/semi-graphic and touchscreen <b>Magelis XBT R, RT</b> .....	3
● Advanced Panel with touchscreen / keypad <b>Magelis XBT GT, GK</b> .....	4 - 5
● Advanced Panel with touchscreen <b>Magelis XBT GTW</b> .....	6
● Accessories .....	7
● Embedded Panel <b>Magelis Smart</b> .....	8
● PC Panel <b>Magelis Compact iPC</b> .....	9
● Embedded BOX and PC BOX <b>Magelis Smart BOX</b> <b>Magelis Compact PC BOX</b> <b>Magelis Flex PC BOX</b> .....	10
● Industrial display <b>Magelis iDisplay</b> .....	11
● Configuration software <b>Vijeo Designer Lite, Vijeo Designer</b> .....	12 - 13



Type		Characteristics				
Display	Capacity	2 lines, 20 characters		1 to 4 lines, 5 to 20 characters		
	Type	Back-lit LCD green		Back-lit LCD 3 colours green, orange, red	Back-lit LCD green	
Data entry		Via keypad with 8 keys (4 customizable keys)				
Function	Representation of variables	Alphanumeric				
	Alarm log	No	Yes	Yes	Yes	Yes
Communication	Serial link	1 RJ45 (RS 232 - RS 485)		1 Sub-D25 (RS 232 - RS 485)		
Downloadable protocols		Uni-TE, Modbus Master		Uni-TE, Modbus Master, Siemens, Rockwell, Omron, Mitsubishi		Modbus
Development software		Vijeo Designer Lite (on Windows 2000 and XP)				
Dimensions W x D x H		132 x 37 x 74 mm				
Compatibility with PLCs		Twido, Modicon TSX Micro, Modicon Premium, Modicon M340		Twido, Modicon TSX Micro, Modicon Premium, Modicon Quantum, Modicon Momentum, Modicon M340		Motor starter Tesys Model U
Supply voltages		5 VDC or PLC power supply		24 VDC		
References		<b>XBTN200</b>	<b>XBTN400</b>	<b>XBTN410</b>	<b>XBTN401</b>	<b>XBTNU400</b>

(1) Except XBTN200: alphanumeric screen.

## Small Panel Magelis XBT R with matrix screen



Type		Characteristics		
Display	Capacity	4 lines, 20 characters		
	Type	Back-lit LCD green	Back-lit LCD, 3 colours green, orange, red	
Data entry		Via keypad with 20 keys (12 customizable keys)		
Function	Representation of variables	Alphanumeric		
	Alarm log	Yes	Yes	Yes
Communication	Serial link	1 RJ45 (RS 232 - RS 485)	1 Sub-D25 (RS 232 - RS 485)	
Downloadable protocols		Uni-TE, Modbus Master	Uni-TE, Modbus Master/Slave (1), Siemens, Rockwell, Omron, Mitsubishi	
Development software		Vijeo Designer Lite (on Windows 2000 and XP)		
Dimensions W x D x H		137 x 37 x 118 mm		
Compatibility with PLCs		Twido, Modicon TSX Micro, Modicon Premium, Modicon M340	Twido, Modicon TSX Micro, Modicon Premium, Modicon Quantum, Modicon Momentum, Modicon M340	
Supply voltages		5 VDC or PLC power supply	24 VDC	
References		<b>XBTR400</b>	<b>XBTR410</b>	<b>XBTR411</b>

(1) for XBTR411 only

## Magelis XBT RT with semi-graphic and touchscreen



Type		Characteristics		
Display	Capacity	10 lines, 33 characters		
	Type	Back-lit LCD green	Back-lit LCD green, orange, red	
Data entry		Via keypad with 12 keys (10 customizable keys)	Via keypad with 12 customizable keys	
Functions	Representation of variables	Alphanumeric, bargraph, curves, button and light		
	Alarm log	Yes	Yes	
Communication	Serial link	1 RJ45 (RS 232 - RS 485)	1 RJ45 (RS 232 - RS 485)	
Downloadable protocols		Uni-TE, Modbus Master, Siemens, Rockwell, Omron, Mitsubishi		
Development software		Vijeo Designer Lite (on Windows 2000 and XP)		
Dimensions W x D x H		137 x 37 x 118 mm		
Compatibility with PLCs		Twido, Modicon TSX Micro, Modicon Premium, Modicon M340, Modicon Quantum		
Supply voltages		5 VDC or PLC power supply	24 VDC	
References		<b>XBTRT500</b>	<b>XBTRT511</b>	



Type		Characteristics				
Display	LCD screen size	3.8"				
	Type	STN monochrome, amber or red			TFT colour	
Functions	Representation of variables	Alphanumeric, bitmap, bargraph, gauge, button, light, clock, flashing light, keypad				
	Curves / Alarm logs	Yes, with log / Yes, incorporated				
Communication	Serial link	1 RJ45 (RS 232 - RS 485)				
	Networks	–		Ethernet, IEEE 802.3 10 BASE-T, RJ45	Ethernet, IEEE 802.3 10/100 BASE-T, RJ45	
Downloadable protocols	Mitsubishi (Melsec), Omron (Sysmac), Rockwell Automation (Allen Bradley), Siemens (Simatic) Uni-TE, Modbus, Modbus TCP					
Development software	Vije Designer VJD●●●TG●V●●M (on Windows Vista, XP and 2000)					
Dimensions W x D x H	130x41x104mm					
Compatibility with PLCs	Twido, Modicon TSX Micro, Modicon Premium, Modicon Quantum, Modicon M340					
«Compact Flash» card slot	No					
USB port	–	1	–	1	1	
Built-in Ethernet TCP/IP	No		Yes			
Supply voltage	24 VDC					
References	XBTGT1100	XBTGT1105	XBTGT1130	XBTGT1135	XBTGT1335	

## Magelis XBT GT with 5.7" touchscreen



Type		Characteristics				
Display	LCD screen size	5.7"				
	Type	Back-lit STN, monochrome blue      black and white			STN, colour 4096 colours	TFT, colour 65536 colours
Functions	Representation of variables	Alphanumeric, bitmap, bargraph, gauge, button, light, clock, flashing light, keypad				
	Curves / Alarm logs	Yes, with log / Yes, incorporated				
Communication	Serial link	1 Sub-D9 (RS 232/RS 422 - RS 485) + 1 RJ45 (RS 485)				
	Networks	–		Ethernet, IEEE 802.3 10/100 BASE-T, RJ45	–	Ethernet, IEEE 802.3 10/100 BASE-T, RJ45
Downloadable protocols	Mitsubishi (Melsec), Omron (Sysmac), Rockwell Automation (Allen Bradley), Siemens (Simatic) Uni-TE, Modbus, Modbus TCP/IP					
Development software	Vije Designer VJD●●●TG●V●●M (on Windows Vista, XP and 2000)					
Dimensions W x D x H	167.5x60x135mm					
Compatibility with PLCs	Twido, Modicon TSX Micro, Modicon Premium, Modicon Quantum, Modicon M340, Modicon Momentum					
«Compact Flash» card slot	No	Yes				
USB port	1					
Video in	No					
Built-in Ethernet TCP/IP	No	No	Yes	No	Yes	
Supply voltage	24 VDC					
References	XBTGT2110	XBTGT2120	XBTGT2130	XBTGT2220	XBTGT2330	

### Magelis XBT GT with 7.5", 10.4", 12.1", 15" touchscreen



Type		Characteristics									
Display	LCD screen size	7.5"			10.4"			12.1"		15"	
	Type (colour)	STN	TFT	TFT	STN	TFT	TFT	TFT	TFT	TFT	
	Number of colours	4096	65536	65536	4096	65536	65536	65536	65536	65536	
Functions	Representation of variables	Alphanumeric, bitmap, bargraph, gauge, button, light, clock, flashing light, keypad									
	Curves / Alarm logs	Yes, with log / Yes, incorporated									
Communication	Serial link	1 Sub-D9 (RS 232/RS 422 - RS 485) + 1 RJ45 (RS 485)									
	Networks	Ethernet, IEEE 802.3 10/100 BASE-T, RJ 45									
Downloadable protocols		Mitsubishi (Melsec), Omron (Sysmac), Rockwell Automation (Allen Bradley), Siemens (Simatic) Uni-TE, Modbus, Modbus TCP/IP									
Development software		Vijeo Designer VJD●●●TG●V●●M (on Windows Vista, XP and 2000)									
Dimensions W x D x H (mm)		215x60x170			313x56x239		271x57x213		313x56x239		395x60x294
Compatibility with PLCs		Twido, Modicon TSX Micro, Modicon Premium, Modicon Quantum, Modicon M340									
«Compact Flash» card slot		Yes									
USB port		1	1	1	2	2	2	2	2	2	
Video in		No	No	Yes	No	No	Yes	No	Yes	Yes	
Built-in Ethernet TCP/IP		Yes									
Supply voltage		24 VDC									
References		XBTGT4230	XBTGT4330	XBTGT4340	XBTGT5230	XBTGT5330	XBTGT5340	XBTGT6330	XBTGT6340	XBTGT7340	

### Magelis XBT GK with 5.7", 10.4" touchscreen/keypad

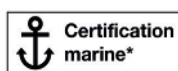


Type		Characteristics		
Display	Screen size	5.7"		10.4"
	Type	STN monochrome black and white		TFT Colour 65536 colours
Data entry	Soft function keys with LED	14		18
	Static function keys with LED	10 + legends		12 + legends
	Service keys / Alphanumeric keys	8 / 12		
	Touchscreen and industrial pointer	Yes		
Functions	Representation of variables	Alphanumeric, bitmap, bargraph, gauge, button, light, clock, flashing light, keypad		
	Curves	Yes, with log		
	Alarm logs	Yes		
Communication	Serial link	1 Sub-D9 (RS 232/RS 422 - RS 485) + 1 RJ45 (RS 485)		
	Networks	-	Ethernet, IEEE 802.3 10/100 BASE-T, RJ 45	
Downloadable protocols		Mitsubishi (Melsec), Omron (Sysmac), Rockwell Automation (Allen Bradley), Siemens (Simatic) Uni-TE, Modbus, Modbus TCP/IP		
Development software		Vijeo Designer VJD●●●TG●V●●M (on Windows Vista, XP and 2000)		
«Compact Flash» card slot		Yes		
Dimensions W x D x H		220,3x88x265mm	296x91x332mm	197x92,6x147mm
Compatibility with PLCs		Twido, Modicon TSX Micro, Modicon Premium, Modicon Quantum, Modicon M340		
USB port		1	1	2
Video in		No	No	No
Built-in Ethernet TCP/IP		No	Yes	
Supply voltage		24 VDC		
References		XBTGK2120	XBTGK2330	XBTGK5330



Type		Characteristics	
Display	LCD screen size	8.4"	15"
	Type (colour)	TFT	TFT
	Number of colours	262 144	
Functions	Representation of variables	Alphanumeric, bitmap, bargraph, gauge, button, light, clock, flashing light, keypad	
	Curves / Alarm historic	Yes, with log / Yes, incorporated	
Communication	Serial link	2 Sub-D9 (RS 232)	
	Networks	Dual Ethernet, IEEE 802.3 10/100/1Gb BASE-T, RJ 45	
Downloadable protocols	Mitsubishi (Melsec), Omron (Sysmac), Rockwell Automation (Allen Bradley), Siemens (Simatic) Uni-TE, Modbus, Modbus TCP/IP		
Development software	Vijeo Designer VJD●●●TG●V●●M (on Windows Vista, XP and 2000)		
Dimensions W x D x H (mm)	230 x 177 x 65		395 x 294 x 65
Compatibility with PLCs	Twido, Modicon TSX Micro, Modicon Premium, Modicon Quantum, Modicon M340		
«Compact Flash» card slot	2		1
USB port	4		4 + 1 on front panel
PCMCIA slot	0		2
Video in	No		
Built-in Ethernet TCP/IP	2		
Supply voltage	24 VDC		
References	XBTGTW450		XBTGTW750

### Certifications Magelis XBT range: Depending on model\*



Catégorie 3



\* For more information, consult your HMI catalog.



# Magelis Accessories



Connection cables	PC to Magelis transfer cables 2.5 m	2 m
Application	PC to XBTN / R / RT	PC to XBTGT / GK / GTW
Type of connector	RJ45/RJ45	USB/USB
Physical link	RS 485	–
References	XBTZ925 (1)	XBTZG935

(1) Adaptor TSXCUSB485 for linking USB port of PC, to be used with connecting cables XBTZ925

Cards and gateways for fieldbus	Modbus Plus	FIPWAY	Profibus DP	Device Net
References	XBTZGUMP	TSXCUSBFIP	XBTZGPDP	XBTZGDVN

Connection cables	PLC connection cables (2.5 m)					
Application	XBTGT, GK, N200, N400, R400 RT Modicon M340	Twido, Modicon TSX Micro, Modicon Premium	XBTGT,GK,GTW to: Modicon Quantum	XBT N410, N401, R410, R411 to: Twido Modicon TSX Micro, Modicon Premium	Modicon Quantum	Modicon M340
Type of connector	RJ45/RJ45	RJ45 / MiniDin	SUB D 9 / SUB D 9	MiniDin / SUB D 25	SUB D 9 / SUB D 25	RJ45 / SUB D 25
Physical link	RS 485	RS 485	RS 232	RS 485	RS 232	RS 485
References	XBTZ9980	XBTZ9780	990NAA26320	XBTZ968	XBTZ9710	XBTZ938

«Compact Flash» card				
Memory	128 MB	256 MB	512 MB	1 GB
References	XBTZGM128	XBTZGM256	MPCYN00CFE00N	MPCYN00CF100N

Connection cables	off-set USB
Application	XBTGT (except XBTGT1100/1130) / GT / GTW
Type of connector	USB / USB
Reference	XBTZGUSB



			Smart 8.4"	Smart 12"	Smart 15"
Touch screen			8.4" LCD TFT	12" LCD TFT	15" LCD TFT
Resolution			SVGA 800x600	SVGA 800x600	XGA 1024x768
Front side port			NA	1 x USB	1 x USB
Processor			Celeron M@600MHz	Celeron M@600MHz	Celeron M@600MHz
RAM			256MB ▶ 1024MB	256MB ▶ 1024MB	256MB ▶ 1024MB
SRAM (Vijeo Designer)			512 kB	NA	512 kB
Storage			CF 1GB	CF 1GB	CF 1GB
Extension			NA	1 x PCMCIA type I (or type III)	2 x PCMCIA type I (or type III)
Ethernet ports			2 (10/100/1G + 10/100)	2 (10/100/1G + 10/100)	2 (10/100/1G + 10/100)
I/O ports			4 x USB, 2 x RS 232	4 x USB, 2 x RS 232	4 x USB, 2 x RS 232
Dimensions			230 x 177 x 65	313 x 239 x 60	395 x 294 x 65
Optimized (Compact Flash disk)	Client Edition	AC	<b>MPCST11NAJ00T</b>	<b>MPCST21NAJ10T</b>	<b>MPCST52NAJ20T</b>
		DC	<b>MPCST11NDJ00T</b>	–	<b>MPCST52NDJ20T</b>
	HMI Edition (Vijeo Designer)	AC	<b>MPCST11NAJ00H</b>	<b>MPCST21NAJ10R</b>	<b>MPCST52NAJ20H</b>



			Compact iPC 8.4"	Compact iPC 12"	Compact iPC 15"
<b>Touch screen</b>			8.4" LCD TFT	12" LCD TFT	15" LCD TFT
<b>Resolution</b>			SVGA 800x600	XGA 1024x768	XGA 1024x768
<b>Front side port</b>			NA	1 x USB	1 x USB
<b>Processor</b>			Celeron M@1GHz	Celeron M@1.3 GHz	Pentium M@1.6GHz
<b>RAM</b>			512MB ▶ 1024MB	512MB ▶ 1024MB	512MB ▶ 2GB
<b>SRAM (Vijeo Designer)</b>			512 kB	NA	512 kB
<b>Drive devices</b>			NA	NA	DVD + 3.5" Floppy
<b>Storage</b>			HDD ≥ 40GB	HDD ≥ 40GB	HDD ≥ 40GB
<b>Extension</b>			NA	1 x PCMCIA type I (or type III)	2 x PCMCIA type I (or type III)
<b>Ethernet ports</b>			2 (10/100/1G + 10/100)	2 (10/100/1G + 10/100)	2 (10/100/1G + 10/100)
<b>I/O ports</b>			4 x USB, 2 x RS 232	4 x USB, 2 x RS 232	4 x USB, 2 x RS 232
<b>Video ports</b>			NA	NA	1 x RGB
<b>Dimensions</b>			230 x 177 x 120	313 x 239 x 100	395 x 294 x 100
<b>General Purpose</b> (HDD)	<b>Client Edition</b>	AC	<b>MPCKT12NAX00N</b>	<b>MPCKT22NAX00N</b>	<b>MPCKT55NAX20N</b>
		DC	–	–	<b>MPCKT55NDX20N</b>
	<b>HMI Edition (Vijeo Designer)</b>	AC	<b>MPCKT12NAX00H</b>	<b>MPCKT22NAX00R</b>	<b>MPCKT55NAX20H</b>
<b>Heavy Duty</b> (Flash disk)	<b>Client Edition</b>	AC	<b>MPCKT12SAX00N</b>	<b>MPCKT22SAX00N</b>	<b>MPCKT55MAX20N</b>
		AC	<b>MPCKT12SAX00H</b>	<b>MPCKT22SAX00H</b>	<b>MPCKT55MAX20H</b>
	<b>SCADA Edition (Vijeo Citect)</b>	AC			
		Vijeo Citect Full 500 I/O		<b>MPCKT12MAX00V (1)</b>	
		Vijeo Citect Lite 1200 I/O			<b>MPCKT55MAX20V (1)</b>

(1) Products available soon

### Magelis Smart BOX, Magelis Compact PC BOX Magelis Flex PC BOX



			Smart BOX	Compact PC BOX	Flex PC BOX F	Flex PC BOX H
<b>Processor</b>			Celeron M@600MHz	Celeron M@1GHz	Celeron M@1.86GHz or Core Duo@2GHz	Celeron M@1.86GHz or Core Duo@2GHz
<b>RAM</b> Default ▶ Max			256MB ▶ 1024MB	512MB ▶ 1024MB	512/1024MB ▶ 4096MB	
<b>Storage</b>			CF 1GB	1 drive HDD60GB or Flash disk 8GB or 16GB	1 or 2 drives HDD80GO with RAID option or Flash disk 8GB or 16GB	
<b>Drives</b>			NA	NA	CD-DVD reader CD-DVD writer option	
<b>Extension</b>			NA	1 x PCI	2 x PCI	4 x PCI
<b>Video ports</b>			1 x RGB	1 x RGB	1 x DVI-I (support RGB)	
<b>Ethernet ports</b>			2 (10/100/1G + 10/100)	2 (10/100/1G + 10/100)	2 (10/100/1 G + 10/100)	
<b>I/O ports</b>			4 x USB, 2 x RS 232	4 x USB, 2 x RS 232	4 x USB, 4 x RS 232	
<b>Power supply</b>			24VDC & 100...240VAC (External adaptator)	100...240VAC	24VDC & 100...240VAC	
<b>Certification</b>			UL508, CSA	UL508, CSA	UL508, CSA, HAZ-LOC	
<b>Connection</b>						
		<b>for iDisplay</b>	Yes	Yes	Yes	Yes
		<b>for Front Panel</b>	No	No	Yes	Yes
<b>Dimensions</b>			218 x 165 x 65	218 x 165 x 115	243 x 160 x 289	243 x 205 x 289
<b>General Purpose</b> (HDD)	<b>Base Windows XP</b>	AC	–	<b>MPCKN02NAX00N</b>	<b>MPCFN02NAX00N</b>	<b>MPCHN02NAX00N</b>
		AC	–	–	<b>MPCFN05NAX00N</b>	<b>MPCHN05NAX00N</b>
		DC	–	–	<b>MPCFN02NDX00N</b>	–
		DC	–	–	<b>MPCFN05NDX00N</b>	<b>MPCHN05NDX00N</b>
	<b>HMI Edition (Vijeo Designer)</b>	AC	–	<b>MPCKN02NAX00H</b>	–	–
<b>Heavy Duty</b> (Flash disk)	<b>Base Windows XP</b>	AC	–	<b>MPCKN02SAX00N</b>	<b>MPCFN05MAX00N</b>	<b>MPCHN05MAX00N</b>
	<b>HMI Edition (Vijeo Designer)</b>	AC	–	<b>MPCKN02SAX00H</b>	<b>MPCFN05SAX00H</b>	<b>MPCHN05SAX00H</b>
<b>Optimized</b> (Compact flash)	<b>Client Edition (base XPe)</b>	AC	<b>MPCSN01NAJ00T</b>	–		
		DC	<b>MPCSN01NDJ00T</b>	–		
	<b>HMI Edition (Vijeo Designer)</b>	AC	<b>MPCSN01NAJ00H</b>	–		
		DC	<b>MPCSN01NDJ00H</b>	–		

## Industrial display Magelis iDisplay with 15", 19" touchscreen



	15" touch & keypad	15" touch	19"touch
<b>Touchscreen</b>	15" LCD TFT	15" LCD TFT	19" LCD TFT
<b>Resolution</b>	XGA 1024x768	XGA 1024x768	SXGA 1280x1024
<b>Front side port</b>	1 x USB	1 x USB	1 x USB
<b>Video ports</b>	1 x VGA & 1 x DVI	1 x VGA & 1 x DVI	1 x VGA & 1 x DVI
<b>Touchscreen ports</b>	1 x USB & 1 x RS 232	1 x USB & 1 x RS 232	1 x USB & 1 x RS 232
<b>Power supply</b>	100...240VAC	100...240VAC	100...240VAC
<b>Certification</b>	UL508, CSA	UL508, CSA	UL508, CSA
<b>Dimensions</b>	483 x 365 x 65	395 x 294 x 60	460 x 390 x 65
<b>References</b>	AC – (1)	<b>MPCYT50NAN00N</b>	<b>MPCYT90NAN00N</b>

(1) Available 4<sup>th</sup> quarter 2008

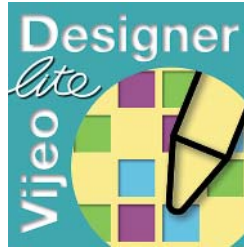
## Front Panel Magelis iPC To be connected only with Magelis Flex PC BOX



Front Panel	12" touch & keypad	15" touch & keypad	15" touch	19" touch
<b>Touchscreen</b>	12" LCD TFT	15" LCD TFT	15" LCD TFT	19" LCD TFT
<b>Resolution</b>	SVGA 800x600	XGA 1024x768	XGA 1024x768	SXGA 1280x1024
<b>Front side port</b>	1 x USB	1 x USB	1 x USB	1 x USB
<b>Dimensions</b>	420 x 320 x 31	483 x 365 x 31	420 x 320 x 31	460 x 390 x 44
<b>References</b>	<b>MPCYB20NNN00N</b>	<b>MPCYB50NNN00N</b>	<b>MPCYT50NNN00N</b>	<b>MPCYT90NNN00N</b>

# Vijeo Designer Lite \_\_\_\_\_ Configuration software

## Magelis XBT N, R, RT



Vijeo Designer Lite configuration software enables the creation of simple operator dialogue applications on Magelis XBT N, R and RT Small Panel ranges.

It also enables transparent recovery of all applications for Magelis XBT N and R produced using its predecessor: XBT L1000.

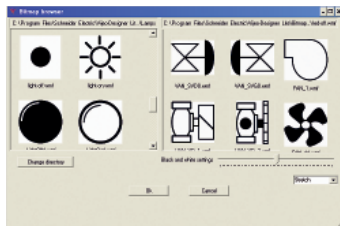
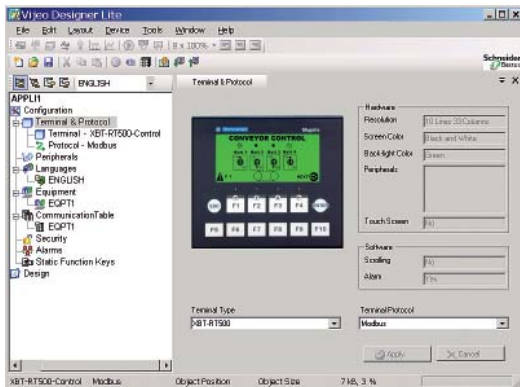
For simplified installation and improved consistency, Vijeo Designer Lite retains the main characteristics of Vijeo Designer software (ergonomics, interface ...) which has become the reference in the HMI field.

### Configuration

Vijeo Designer Lite software enables fast and easy creation of different types of pages (application page, alarm pages, help pages...) and the installation of navigation between pages.

It offers:

- Graphic objects developed for Magelis XBT RT (bar charts, trend curves...)
- Character fonts Byzantine, simplified Chinese, Cyrillic, Japanese
- Project reports
- Application simulation on PC
- Six languages : English, French, German, Italian, Spanish and Chinese.

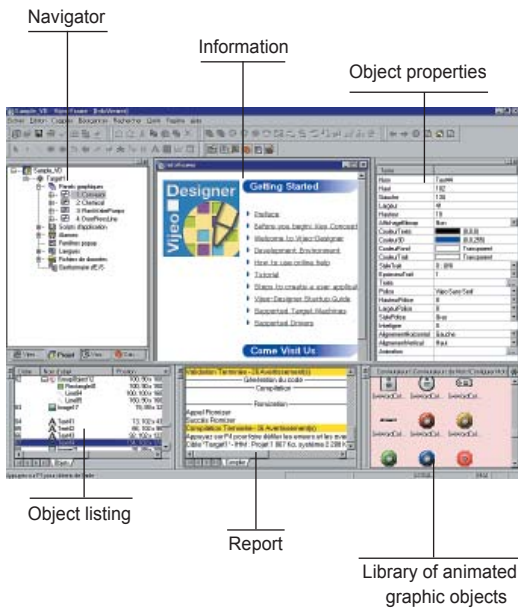


### Selection guide

Number of licenses	Composition	References
Single (1)	Without cable With USB cable	VJDSNDTMSV●●M VJDSUDTMSV●●M
Group (3)	Without cable	VJGNDTMSV●●M
Team (10)	Without cable	VJDTNDTMSV●●M
Facility (Unlimited)	Without cable	VJDFNDTMSV●●M
Transfer cable for USB port	Adapter Link USB / Serial Link	XBTZ925 TSXCUSB485

Software is delivered on CD-ROM and can be executed under Windows Vista, XP and 2000.  
●● represents version number.

\* Available with Vijeo Designer ≥ 5.0



Vijeo Designer configuration software enables creation of automated system control operator dialogue applications for XBT GT, GK, GTW terminals and Smart & Compact iPC. It also enables management of the multimedia functions of XBTGTs and Smart & Compact iPC (video and audio) and offers users of Ethernet terminals and iPC remote access via a Web browser (WEB Gate function).

#### Configuration

Vijeo Designer configuration software enables fast, simple processing of operator dialogue projects thanks to its ergonomics, developed around 6 configurable windows.

It also offers comprehensive application management tools:

- Project creation; projects comprising one or several applications.
- Recipe editor (32 groups of 64 recipes of max. 1024 ingredients).
- User action list (eg. script) for application adaptability.
- Application variable cross-referencing.
- Vectorial graphic library for more attractive graphic screens.
- Application block diagram documentation.
- Simulation mode for simple design office application testing.
- High-performance graphic editor for simple block diagram creation (over 30 animated preconfigured objects).
- Support of layers and masks for faster development.
- Data sharing (up to 300 variables on 8 terminals).
- Management of 40 languages (including simplified Chinese, Korean, Arabic and Hebrew).
- Programmable controller database sharing (Unity, PL7, Concept, TwidoSoft, ProWORX, ModSoft).
- Advanced traceability function (periodic, at event or on request).
- Project backup on terminal for simple maintenance.
- User-friendly data recovery tool.
- Support of standard USB peripherals (USB key up to 2 GB).
- Support of external USB keyboards and mice.
- Integration with Schneider Electric equipment (buffer diag., variables access ...)
- Over 35 third party protocols
- Multilingual software : English, french, german, italian, spanish and chinese.

#### Selection guide

Number of licenses	Composition	References
Single (1)	Without cable With USB cable	VJDSNDTGSV●●M VJDSUDTGSV●●M
Group (3)	Without cable	VJDGNDTGSV●●M
Team (10)	Without cable	VJDTNDTGSV●●M
Facility (Unlimited)	Without cable	VJDFNDTGSV●●M

Software is delivered on CD-ROM and can be executed under Windows Vista, XP and 2000.  
●● represents version number.

**Schneider Electric Industries SAS**

Head office  
89, bd Franklin Roosevelt  
92506 Rueil-Malmaison Cedex  
France

[www.schneider-electric.com](http://www.schneider-electric.com)

Owing to changes in standards and equipment, the characteristics given in the text and images in this document are not binding until they have been confirmed with us.  
Design: IGS-CP  
Photos: Schneider Electric - Image bank  
Print: Ingoprint