

CAMGRO **F** SYSTEM

FINAL DISTRIBUTION BOARDS

*QUALITY, SIMPLICITY,
ROBUSTNESS AND RELIABILITY*



Energy



Industry



Residential



Infrastructure



Wide range of Robust, Reliable and Safe Final Distribution Boards

Camgro **F** System Final Distribution Boards, delivered complete with M/s.Schneider Electric components and integrated within enclosures for high performances up to 250A for residential, commercial, infrastructure, industrial and Oil & Gas installations.



Product Features

Durable

- ◆ Enclosures are fabricated from 1.2mm thick electro galvanized steel sheets.
- ◆ Fully tested and certified high performance tin plated bus bar system.

Guaranteed Safety

- ◆ CAMGRO **F** System is designed and built to the latest international standards IEC 61439- 1&2.
- ◆ Safety is enhanced by thermoplastic barriers to maintain alignment and isolation between phases.
- ◆ Fully shrouded live busbars with dead front cover and door.

Salient Features

- ◆ Busbar system is designed for ratings of 125A and 250A.
- ◆ Wide range of outgoing starting from 12 ways up to 54 ways with a maximum rating of 63A.
- ◆ Modular construction.
- ◆ Electrostatic polyester powder coating in RAL-7032 shade for corrosion resistance.
- ◆ Adequate cabling space.
- ◆ Optimized Maintenance and Operation.
- ◆ Approved by ADDC and inline with the requirements of all U.A.E authorities, as well as inline with the specifications of authorities in the Gulf countries

Technical Specifications

Constructional Characteristics

- Complies with IEC 61439-1 & 2.
- Totally Type Tested, KEMA / DEKRA certified.
- Degree of protection conforms to IP 41 as per IEC 60529.
- Enclosure with pan assembly and comb busbar.
- Multiple knockout holes at top & bottom gland plate.
- Suitable for Surface & Flush mounting
- Neutral strip is fixed at left side of the distribution boards.
- Earth strip is fixed at Right side of the distribution boards.
- Suitable for Wall mounting.

Electrical Characteristics

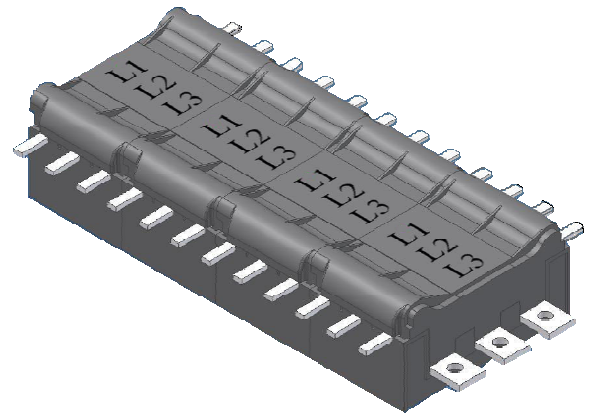
- Rated Operational Voltage (Ue) : 415V.
- Rated Insulation Voltage (Ui) : 415V.
- Rated Frequency : 50/60Hz.
- Rated Current (In) : up to 250A.
- Rated Short Time Withstand Current(Icw) : up to 25KA/0.2sec.
- Rated Peak Withstand Current (Ipk) : up to 52KA.
- Clearance : > 5.5 mm.
- Creepage : > 6.3 mm.

Busbar Systems for split type and straight type distribution boards

- Fully type tested encapsulated busbar system
- Tin plated copper Busbars
- Main Busbar is suitable for MCCBs/Isolators up to 250A and RCCBs up to 125A
- Outgoing connections up to 63A
- Rating: 125A Split type and 250A straight Busbar type
- Short time Withstand currents(Icw) : 17kA for 0.25Sec (125A), 25kA for 0.2Sec. (250A).

Busbar types:

Type of Incomer	MCCB	RCCB / ISOLATOR
Incoming Rating	250A	125A
Busbar Rating	250A	125A



Busbar Systems for din rail type Distribution boards

- Fully insulated comb busbar system
- Busbar is suitable for RCCBs / Isolators up to 125A
- Outgoing connections up to 63A
- Rating: 63A and 125A Comb Busbar

Busbar types:

Type of Incomer	RCCB / ISOLATOR	ECONOMY RCCB / ISOLATOR
Incoming Rating	125A	63A
Busbar Rating	125A	63A



Incoming Devices

Technical Specifications

Standard range of Moulded Case Circuit Breakers conforming to IEC 60947-2

Rated current (In)	40A....250A					
Rated operational voltage(Ue)	Up to 690V					
Rated frequency	50/60 Hz					
Breaker Rating	40....100A		125/160A		200/250	
Breaking Capacity (Icu) (kA rms) at 415V	36	50	36	50	36	50
Service Breaking Capacity Ics.....% Icu	100%		100%		100%	
Protection trip unit	Thermal magnetic or Electronic					



** Boards with 250A incomer can be used as SMDB in certain applications(Approved by ADDC)*

Economy range of Moulded Case Circuit Breakers conforming to IEC 60947-2

Rated current (In)	40A.... 250A						
Rated operational voltage(Ue)	Up to 550V						
Rated frequency	50/60 Hz						
Breaker Rating	40....100A			125....250A			
Breaking Capacity (Icu) (kA rms) at 415V	7.5	10	15	30	18	25	36
Service Breaking Capacity Ics.....% Icu	50%			50%			
Protection trip unit	Thermal magnetic						



** Boards with 250A incomer can be used as SMDB in certain applications(Approved by ADDC)*

Onload Isolators conforming to IEC 60947-1 / IEC 60947-3

Rated current (In)	40A....250A						
Rated Operational Voltage(Ue)	Up to 690V						
Rated frequency	50/60Hz						
Isolator rating	40A	63A	80A	100A	125A	160A	250A
Short-circuit making capacity Icm (kA peak) with upstream protection circuit breaker	75	75	75	154	154	154	330



Incoming Devices

Technical Specifications

RCCBs conforming to IEC 61008,60947-1 & 60947-3

Rated current (In)	25A....125A											
Rated operational voltage(Ue)	Up to 415V											
Rated frequency	50/60 Hz											
Type Of RCCB	NORMAL						ECONOMY					
RCCB Rating in Amps	25A	40A	63A	80A	100A	100A	125A	25A	40A	63A		
RCCB Sensitivity (mA)	30...300					30...500		30....300				



MODULAR ISOLATORS conforming to IEC 60669-1 & IEC 60947-3

Rated current (In)	40A....125A					
Rated operational voltage(Ue)	Up to 400V					
Rated frequency	50/60 Hz					
Isolator Rating	32A	40A	63A	100A	125A	



Outgoing Devices

Technical Specifications

Standard range of Miniature Circuit Breakers conforming to IEC 60947-2

Rated current (In).	6A...63A			
Rated operational voltage(Ue)	Up to 415V			
Rated frequency	50/60 Hz			
Breaking capacity (Icu)	10kA		15kA	
No. of pole	1P	3P	1P	3P
MCB Rating	6A...63A		6A...63A	



Economy range of Miniature Circuit Breakers conforming to IEC 60898

Rated current (In).	6A...40A	
Rated operational voltage(Ue)	Up to 400V	
Rated frequency	50/60 Hz	
Breaking capacity (Icu)	6kA	
No. of pole	1P	3P
MCB Rating	6A...40A	6A...40A



Residual Circuit Breaker with Overload. (RCBO) conforming to IEC 61009)

Rated current (In).	6A...45A		
Rated operational voltage(Ue)	Up to 250V		
Rated frequency	50/60 Hz		
Breaking capacity (Icu)	10kA		
No. of pole	1P		
RCBO Rating	6A...45A	6A...45A	6A...45A
RCBO Sensitivity (mA)	10	30	100



Accessories / Auxiliaries



'OF' for MCB



'MX' for MCB



'MN' for MCB



RCCB 'OF' contact



Padlocking device



Blanking Plate

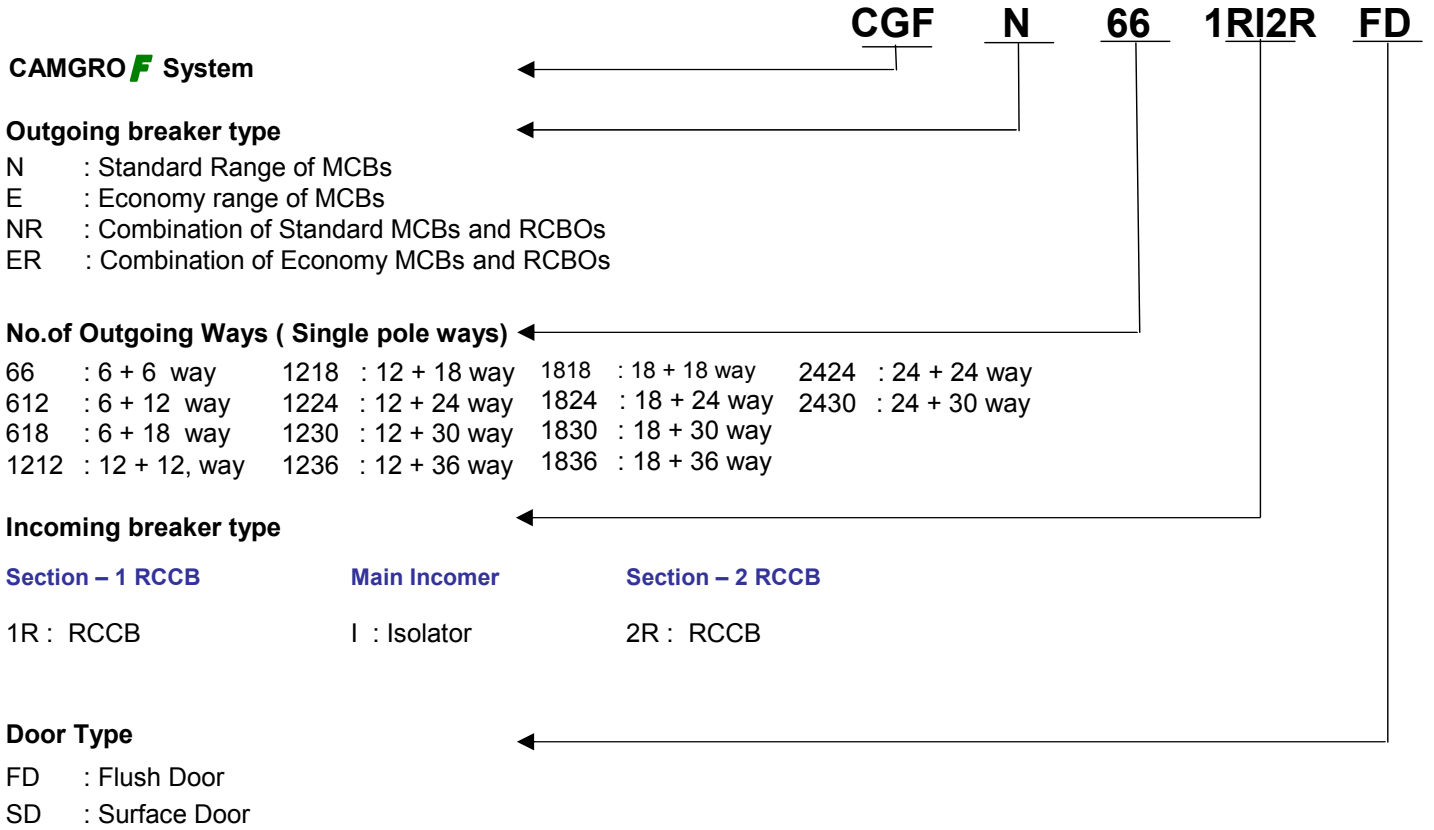
OF : Display contact

MX : Shunt opening release

MN : Under voltage release

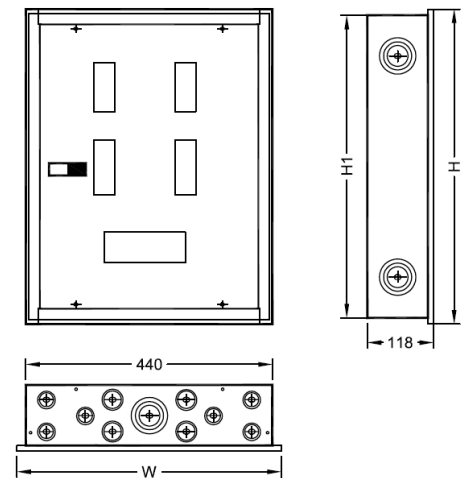
Selection Process

Selection of Split Busbar Type Final Distribution Boards



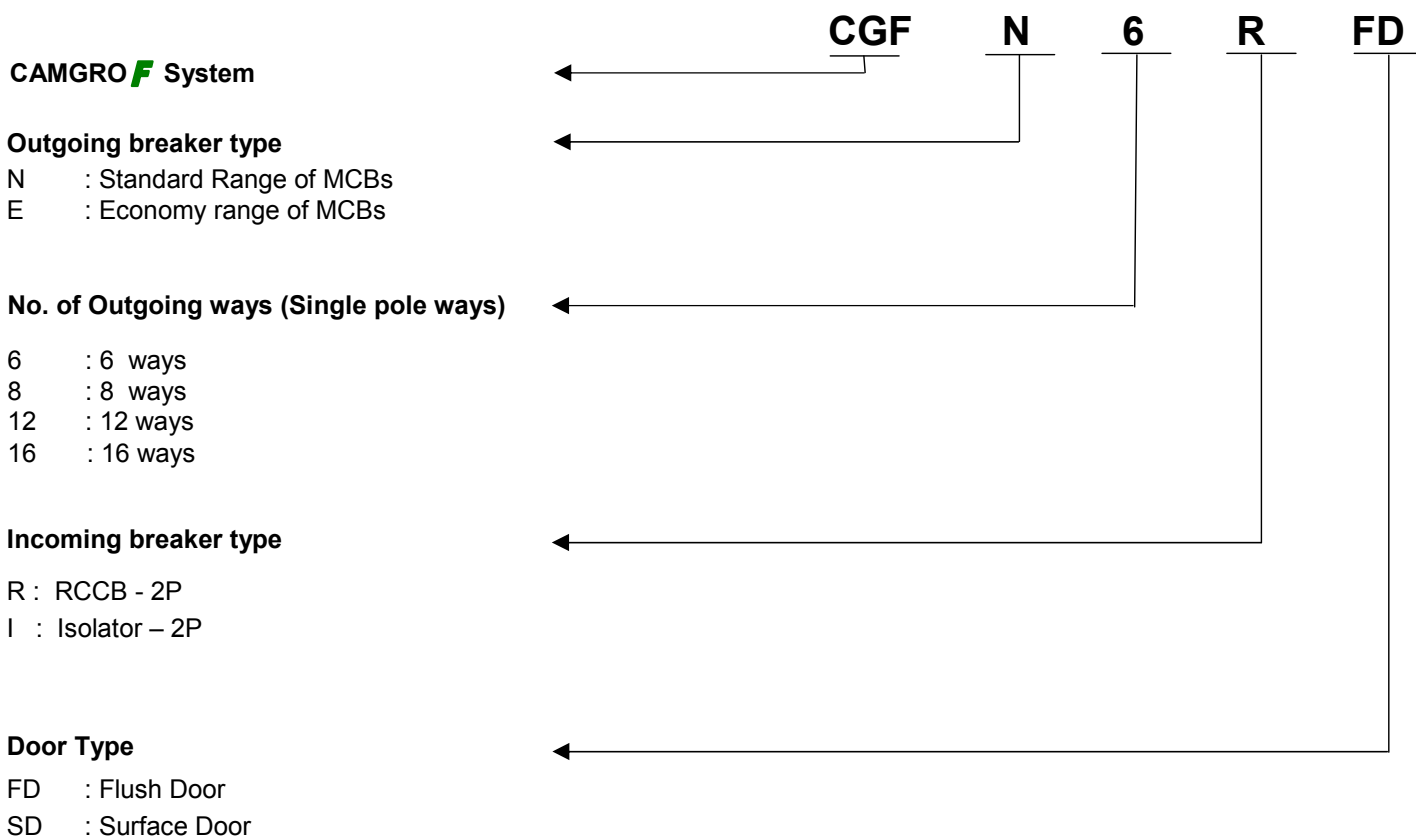
Dimensions

NO. OF WAYS	FLUSH			SURFACE		
	H1	H	W	H1	H	W
66	530	562	472	530	547	457
612, 1212, 618, 1218	690	722	472	690	707	457
1224, 1230, 1236, 1818, 1824, 1830, 2424	850	882	472	850	867	457
2430, 1836	1000	1032	472	1000	1017	457



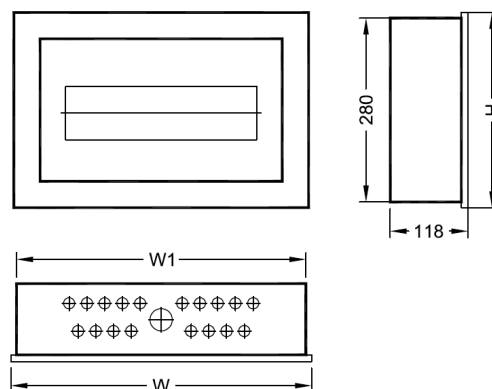
Selection Process

Selection of Single Phase Final Distribution Boards



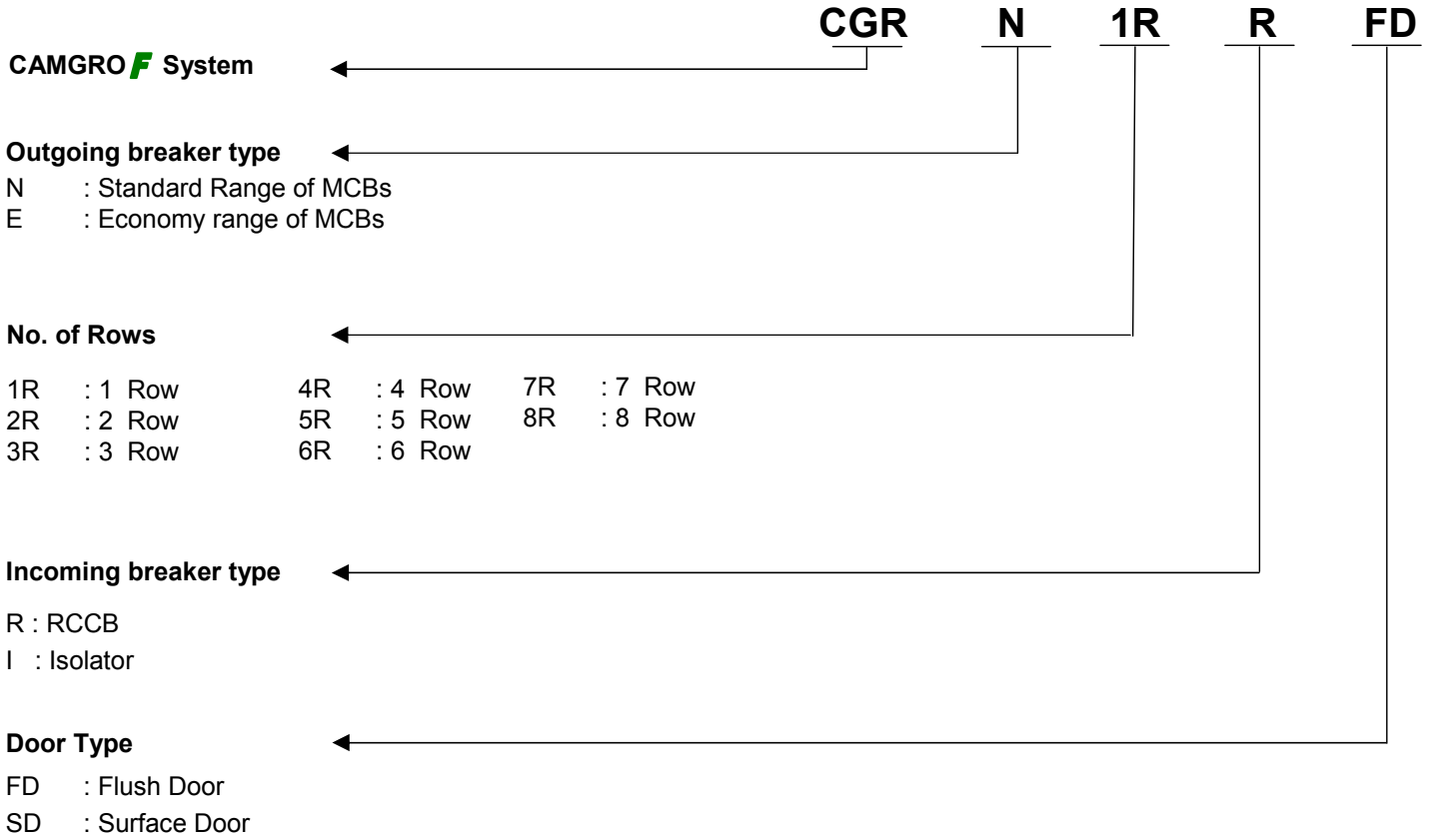
Dimensions

	NO. OF WAYS	FLUSH			SURFACE		
		W1	W	H	W1	W	H
RCCB or Isolator Incomer	6 WAYS	224	256	312	224	241	297
	8 WAYS	296	328	312	296	313	297
	12 WAYS	368	400	312	368	385	297
	16 WAYS	440	472	312	440	457	297



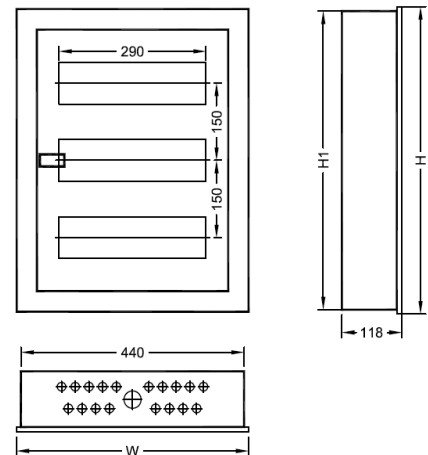
Selection Process

Selection of Din rail Type Final Distribution Boards



Dimensions

NO. OF ROWS	FLUSH			SURFACE		
	H1	H	W	H1	H	W
1 ROW	280	312	472	280	297	457
2 ROW	430	462	472	430	447	457
3 ROW	580	612	472	580	597	457
4 ROW	730	762	472	730	747	457
5 ROW	880	912	472	880	897	457
6 ROW	1030	1062	472	1030	1047	457
7 ROW	1180	1212	472	1180	1197	457
8 ROW	1330	1362	472	1330	1347	457



Certificates

125A Split Type & 250A Distribution Boards Type Tested Certificates



CAMGRO F1 SYSTEM
125A Split type Final Distribution Board



CAMGRO F1 SYSTEM
125A Split type Final Distribution Board
Short Circuit Test

CAMGRO F2 SYSTEM
250A Distribution Board



CAMGRO F2 SYSTEM
250A Distribution Board
Short Circuit Test





Contact us

Head Office - Sharjah

M. Ramakrishna,
Manager,
P O Box : 5629,
Sharjah, UAE.
Mobile : 00971 50 6314057,
Tel : 00971 6 5432436,
Fax : 00971 6 5434139,
Email : ramakrishna@verger-delporte.ae

Abu Dhabi & Al Ain

Krishnaraj,
Assistant Manager,
P O Box : 47010,
Abu Dhabi, UAE.
Mobile : 00971 50 7971556,
Tel : 00971 2 6727317,
Fax : 00971 2 6729699,
Email : krishnaraj@verger-delporte.ae

Dubai & Northern Emirates

Madhu Murthy Arza
Sales Manager,
P O Box : 5629,
Sharjah, UAE.
Mobile : 00971 50 4620874,
Tel : 00971 6 5432436,
Fax : 00971 6 5434139,
Email : madhu@verger-delporte.ae

Website : www.verger-delporte.ae Email - mail@verger-delporte.ae